

SKY D14

Green-e

The most flexible hi-rail basket Thank to it special railway boom




ZERO EMISSION
WORKING MODE

WORLDWIDE
DELTA Boom
N°1

WHEELED
VERSION

Authentic game changer, the **SKY D14** receives the unique concept of the Delta boom, specially designed for railway jobs. Thank to it, the contact line's cable is no longer an obstacle to safety reach all areas of the OHL. It follows the revolutionary SKY C14 on the proven SKY W16 base. The SKY D14 is the railway solution making productivity and safety difference.



SKY D14

Green-e

WHEELED
VERSION

Green-e POWER PACK

Electric motormax power 15 kw
 Batteries 48V/200amp/h ZERO emission range 10h*
 Max speed - Electric mode 3,5 kph
 Self-rechargeable by diesel 50% / 33min
 Plug-in 220V-16A
 *Following standard working cycle

GENERAL DATA

PERKINS Diesel engine - STAGE V 45 kW
 Dimensions in road mode 7730 x 2595 x 2500 mm
 Weight in operation 12 000 kg
 NEOTEC connectivity system GPS, warning, diag

TECHNICAL CHARACTERISTICS

OFF-ROAD MODE

Transmission 4 wheels drive
 Steering 4 wheels steering
 Off road speed 6 km/h
 Gradient capability 25%

RAIL MODE

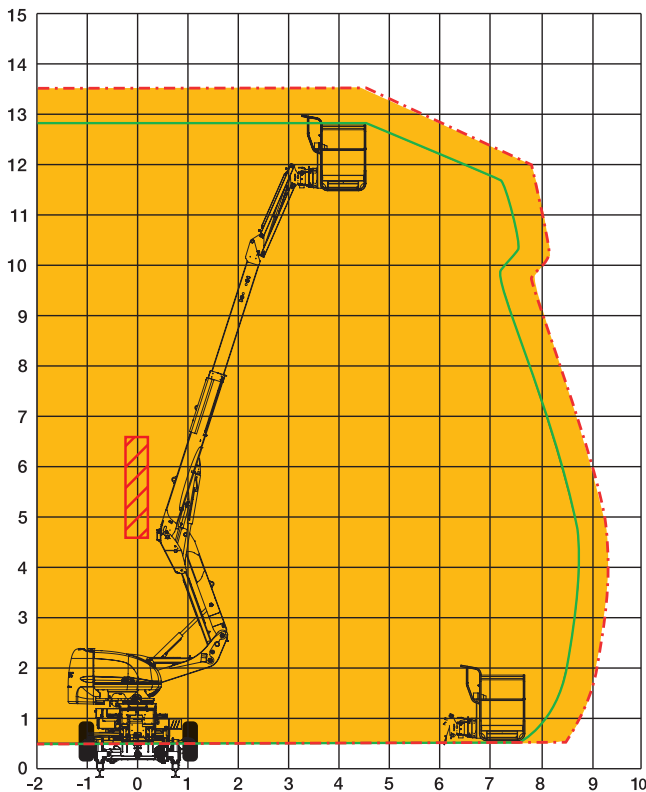
Driven and braked axles x2 NEOTEC EPV 14.32
 Oscillating axle x 1
 Diameter of railway wheels Ø 580 mm
 Max gradient 1/25 - 40%/60% (option)
 Max cant 200 mm
 Max working speed 5.0 kph
 Max travelling speed 16 kph

LIFTING BASKET

Max working height 13,70 m
 Max working outreach 8,70 m
 Basket dimensions 1 800 x 930 mm
 Max payload in the basket 3 persons or 400 kg

OPTIONS

Equipotential mast or Measurement mast
 3,5 Kva generator
 Special storage boxes
 Multigauge axle



With its special railway design, the Delta boom makes possible to bypass the obstacle made by the contact line and allows to open the complete kinematics of the boom without restriction.

