

SKY C14

Green-e

A new boom design to overcome the limitation on Catenary Systems



CRAWLER
VERSION



**ZERO EMISSION
WORKING MODE**



The new **SKY C14** is a concentrate of innovation in the service of catenary systems. It is the first rail/road basket with the NEOTEC DNA. The custom boom is specifically designed to work around the OHL without restriction. In addition, our renowned rubber track system provides quick access to the track. This combination makes it a unique unrivalled machine on the market.

CRAWLER

VERSION



Green-e POWER PACK

Electric motormax power 15 kw
 Batteries 48V/200amp/h ZERO emission range 10h*
 Max speed - Electric mode 3,5 kph
 Self-rechargeable by diesel 50% / 33min
 Plug-in 220V-16A

*Following standard working cycle

GENERAL DATA

PERKINS Diesel engine - STAGE V.....45 kW
 Dimensions in road mode.....7780 x 2850 x 2540 mm
 Weight in operation.....12.000 kg

TECHNICAL DATA

OFF-ROAD MODE

Rubber track x 2 : 2 500 x 400 mm
 Hydrostatic drive 1 motor/track
 Off-road speed From 0 to 1,5 kph
 Gradient capability Up to 45 % on stable ground

RAIL MODE

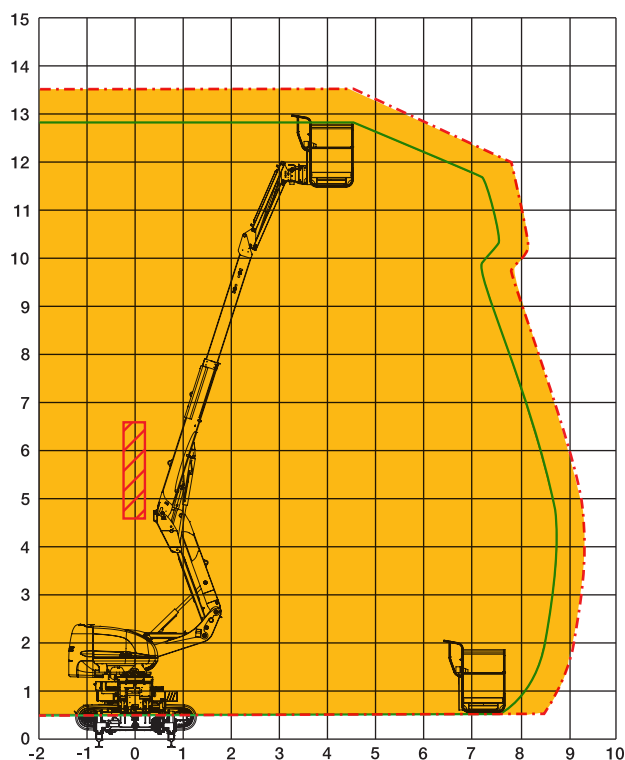
Driven and braked axles X2 NEOTEC EPV 14.32
 Oscillating axle x 1
 Diameter of railway wheels Ø 580 mm
 Max gradient 1/25 - 40‰/60‰ (option)
 Max cant..... 200 mm
 Max working speed 5.0 kph
 Max travelling speed..... 16 kph

LIFTING BASKET

Max working height 13,70 m
 Max working outreach 8.70 m
 Basket dimensions..... 1 800 x 930 mm
 Max payload in the basket 3 people or 400 kg

OPTIONS

Equipotential mast or Measurement mast
 Narrow gauge axle
 Multi gauge axle....1000-1067-1435-1600-1668 mm



With its special railway design, the Delta boom makes possible to bypass the obstacle made by the contact line and allows to open the complete kinematics of the boom without restriction.

