



SKYRAILER 400 W.16



TECHNICAL DATA

KUBOTA Diesel engine..... 34.1 kW
 Dimensions..... 7 817 x 2 385 x 2 501 mm
 Weight in operation..... From 12.500 kg

OFF-ROAD MODE

Transmission..... 4-wheel drive
 Hydrostatic drive 1 motor gearbox
 Off-road speed..... 6 kph
 Gradient capability..... 25 %
 Max admissible step..... Fred

RAIL MODE

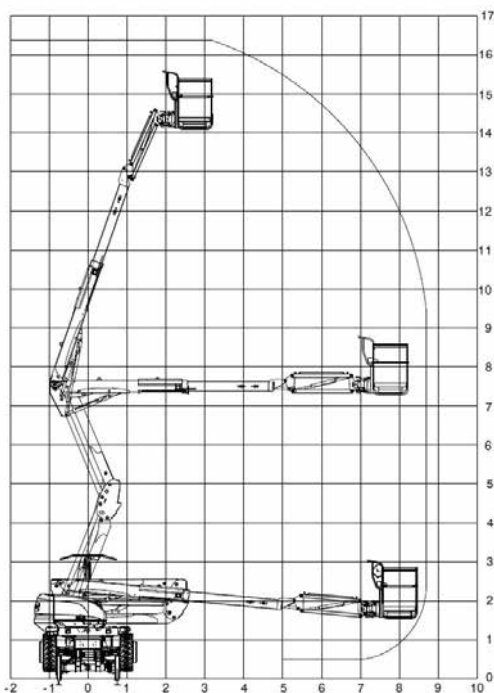
Driven and braked axles..... x 2 EPV 14.32
 Diameter of railway wheels..... Ø 580 mm
 Max gradient 1/25 (40%)
 Max cant 200 mm
 Max working speed 6 kph
 Max travelling speed 16 kph

LIFTING BASKET

Max working height..... 16.25 m
 Max working outreach..... 8.70 m
 Basket dimensions..... 2 300 x 930 mm
 Max payload in the basket..... 3 people or 400 kg

The SKYRAILER 400 W.16 has been developed by NEOTEC in co-operation with MANITOU. The NEOTEC EPV 14.32 axles grant the best in term of safety in rail operation. The SKYRAILER 400 range are the only MEWPs offering 400 kgs payload throughout its whole working envelope.

DIAGRAM



Over 130 in service in the World

