



## SKYRAILER 400 C.14

### TECHNICAL DATA

KUBOTA Diesel engine..... 34.1 kW  
 Dimensions in road mode.... 7 830 x 2 595x 2 500 mm  
 Weight in operation.....12.000 kg

#### OFF-ROAD MODE

Caterpillar tracks..... 2 500 x 400 x 500 mm  
 Hydrostatic drive ..... Rubber track  
 Off-road speed..... From 0 to 3 kph  
 Gradient capability..... Up to 50% on stable ground

#### RAIL MODE

Driven and braked axles..... x 2 EPV 14.32  
 Oscillating axle..... x 1  
 Diameter of railway wheels..... Ø 580 mm  
 Max gradient ..... 40‰  
 Max cant ..... 200 mm  
 Max working speed ..... 5.0 kph  
 Max travelling speed ..... 16.0 kph

#### LIFTING BASKET

Max working height..... 14.00 m  
 Max working outreach..... 8.00 m  
 Basket dimensions..... 1 800 x 930 mm  
 Max payload in the basket..... 3 people or 400 kg  
 No interference with catenary when :  
 - Contact cable ..... above 4.00m  
 - Within : 42° to 138° both side (from the track axis)

#### OPTION

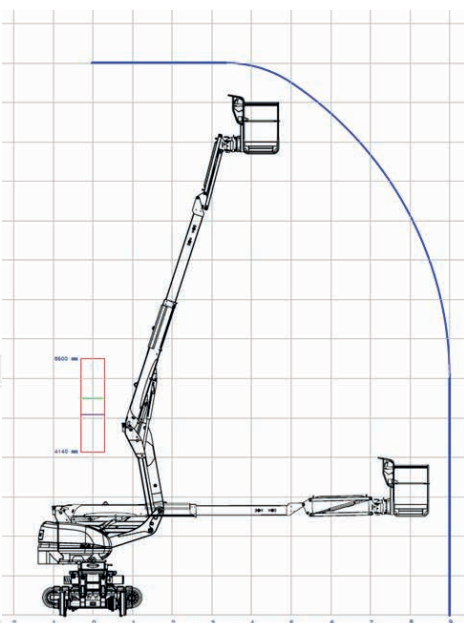
Measurement or contact device..... Telescopic mast



The SKYRAILER 400 C.14 lifting basket kinematic has been engineered to fit all kind of OLE configuration without any restriction. The only road rail MEWP based on rubber tracks that makes a significant breakthrough compared to all other road rail lifting basket.

The SKYRAILER 400 C.14 is the machine designed for changing your future.

### DIAGRAM



## An unique kinematic for catenary works

